

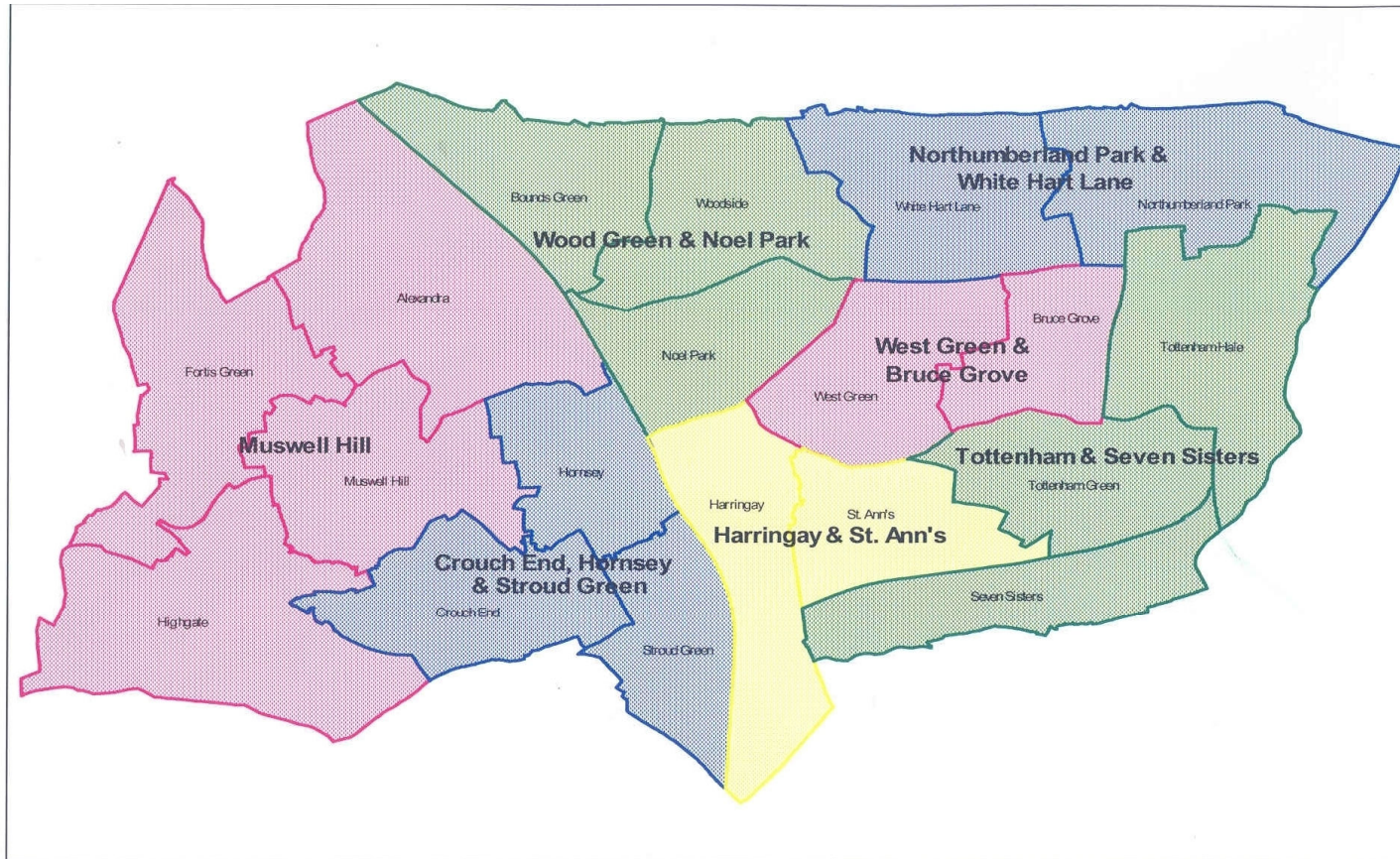


**Neighbourhood Management
Presentation for Haringey
Strategic Partnership:
Recent Activities and Working Methods in
Muswell Hill Area**

25th October 2010

Dr. Tim Clark & Cllr Gail Engert

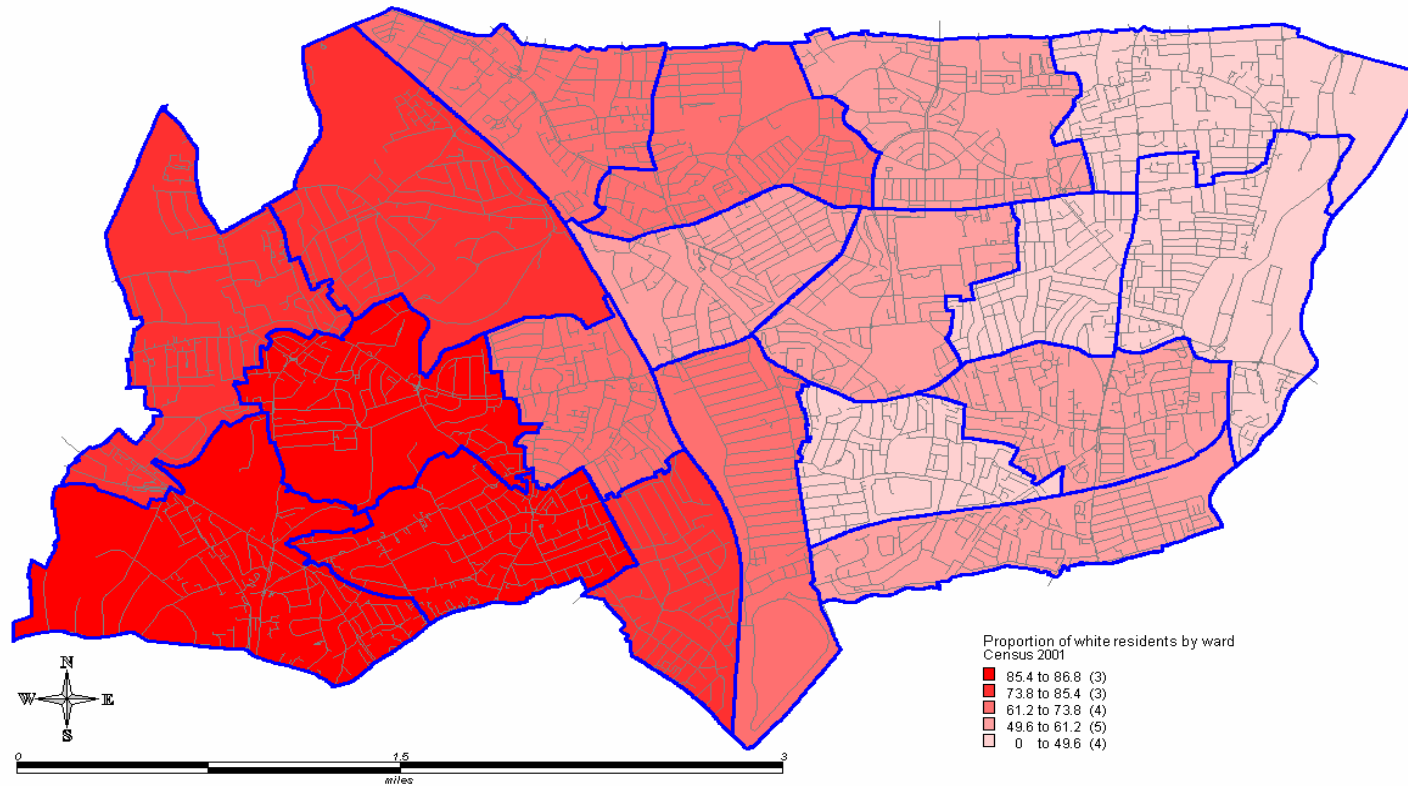
Introduction to Muswell Hill Area and their Priorities



Haringey Area Assemblies

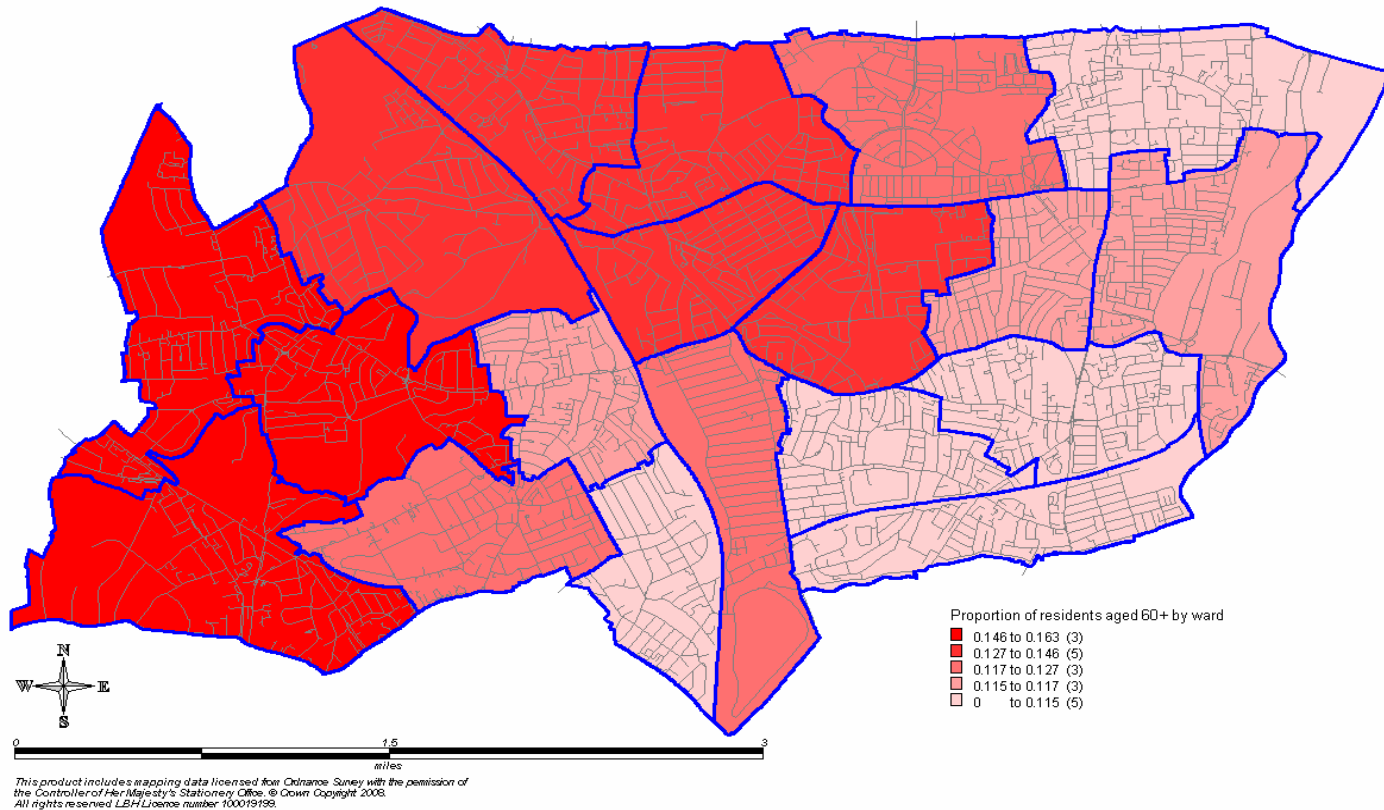
© Crown Copyright LB Haringey 086401 2004

Introduction to Muswell Hill Area and their Priorities



This product includes mapping data licensed from Ordnance Survey with the permission of the Controller of Her Majesty's Stationery Office. © Crown Copyright 2006. All rights reserved LBH Licence number 100019199.

Introduction to Muswell Hill Area and their Priorities



Introduction to Muswell Hill Area and their Priorities

Top Four Priorities:

Improving services for older people (121pts)

Anti-social behaviour (119pts)

Resident Engagement in Decision Making (115pts)

Support to local business (111pts)

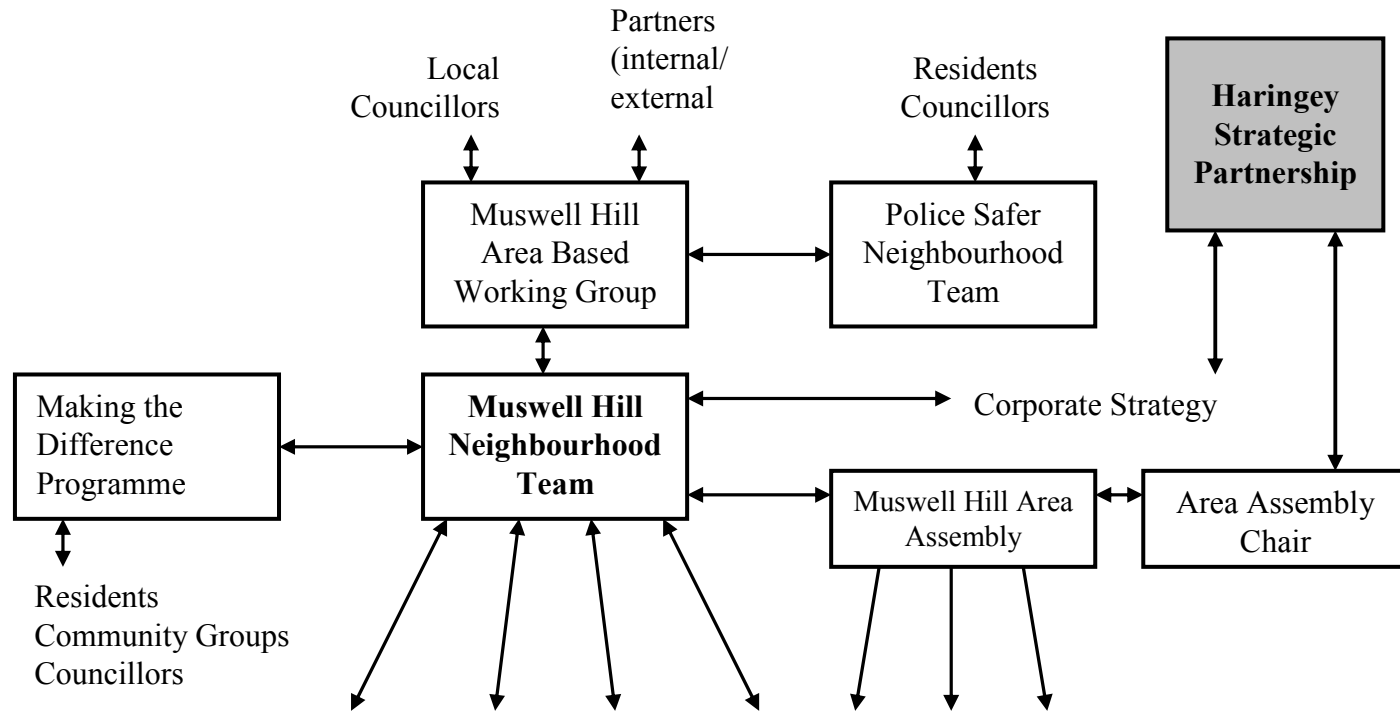
Bottom Three Priorities:

Alcohol free zones (17pts)

Reduce fly tipping (18pts)

Increase neighbourhood watches (20pts)

Muswell Hill Area Working Method: Joined-up working



PARTNERS; Traders Associations, Councillors on behalf of residents, Housing Associations, Neighbourhood Watch, Friends of the Parks Groups, other Community Groups, HAVCO, internal partners, other statutory partners such as the NHS

Case Study 1: Fortis Green Safer Neighbourhood Police Team

- Rising burglary and theft identified as trends by the Acquisitive Crime Partnership Board and the Police Safer Neighbourhood Team
- Causal factors considered by Neighbourhood Management and Safer Neighbourhood Team
- Both teams work together; advice and warnings issued to residents by letter and at the local Area Assembly. Haringey Council undertakes the larger tree pruning, residents encouraged to trim their hedges and consider natural surveillance.
- Outcome: 28% fall in vehicle crime, residents reassured, enhanced trust and pride for and between partners. National recognition on the BBC and the Daily Telegraph

Case Study 2: Highgate Pirate Radio

- Long running problem of pirate radio in Highgate, particularly for high rise social housing identified by social housing provider and residents
- Solution required coordination of multiple agencies including the police, OFCOM, Haringey Council, Homes for Haringey and local residents; joint meeting held between agencies and residents to establish a strategy
- Strategy selected using the principle of maximum disruption to radio operation. Residents and other partners informed using letters, posters and verbal briefing
- Outcome: 4 transmitters confiscated, 9 aerials removed, 1 person arrested, significant disruption to a number of pirate stations. Residents and partners reassured with enhanced trust.

Case Study 3: Muswell Hill Low Carbon Zone

- Funding to reduce carbon emissions under Agenda 21 identified by Haringey Council
- Low Carbon Zone established through partnership between local residents, environmental groups (Muswell Hill Sustainability Group) and Haringey Council
- Neighbourhood Management assisted in linking local groups together, initiating and guiding local participation and staging the launch event
- Outcome: Low Carbon Zone well underway with enhanced levels of participation, regular feedback to Area Assembly

Case Study 4: Fortis Green Community Allotment Trust

- Issue of problematic proposed sale of local allotment site raised by local Councillors
- Intervention by Neighbourhood Management to supply guidance on fund raising and strategy, local engagement, as well as highlighting the Making the Difference programme
- Regular feedback provided to the Area Assembly
- Outcome: site secured for continued use as allotment. Management group now committed to social usage. Potential created for food growing hub in the west of the borough

Benefits to HSP from an Integrated Working Model

- Working together in more than just joint meetings
- Delivering on the ground
- Sharing risk and rewards
- Using superior intelligence to grow community input